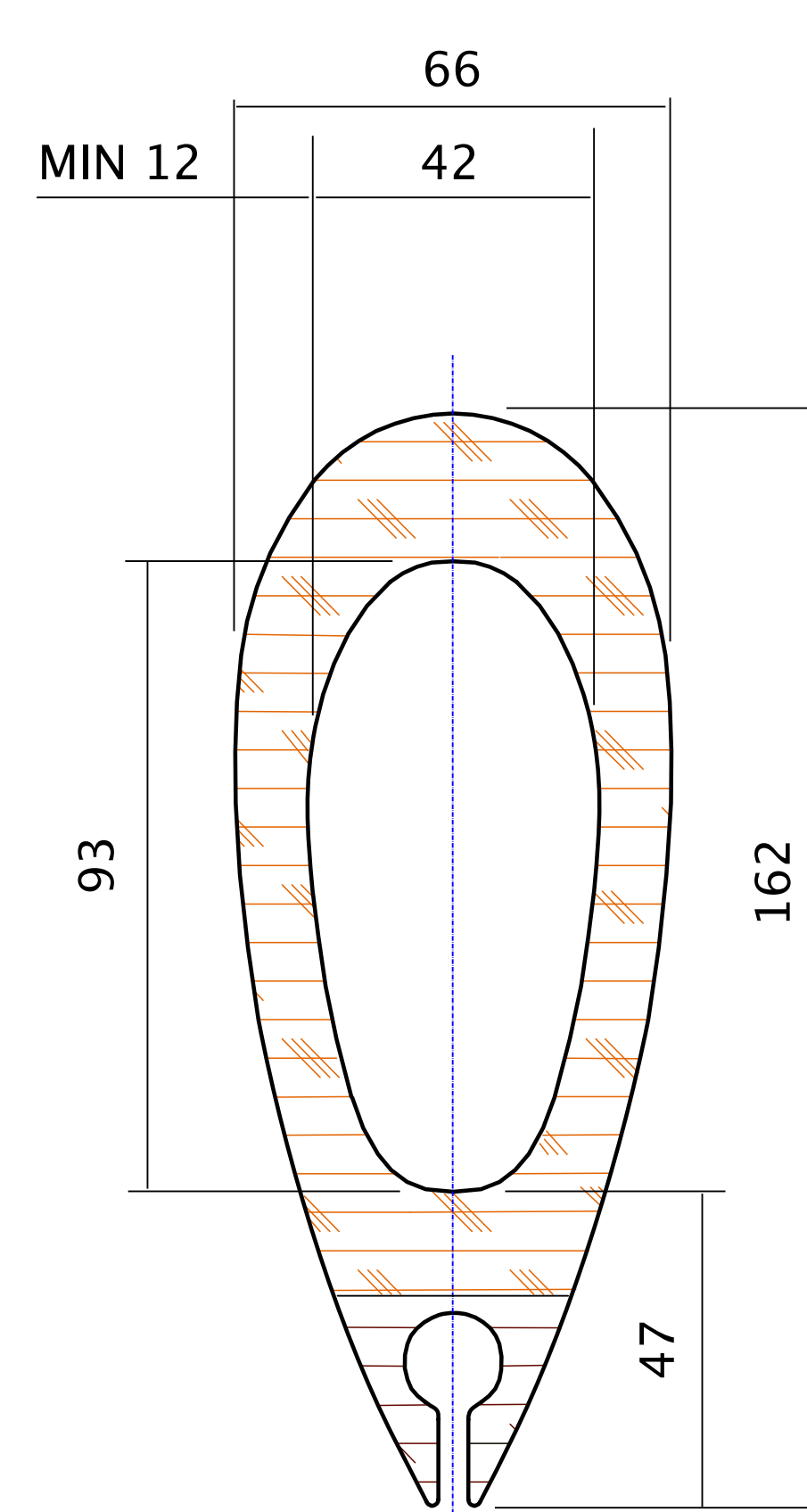
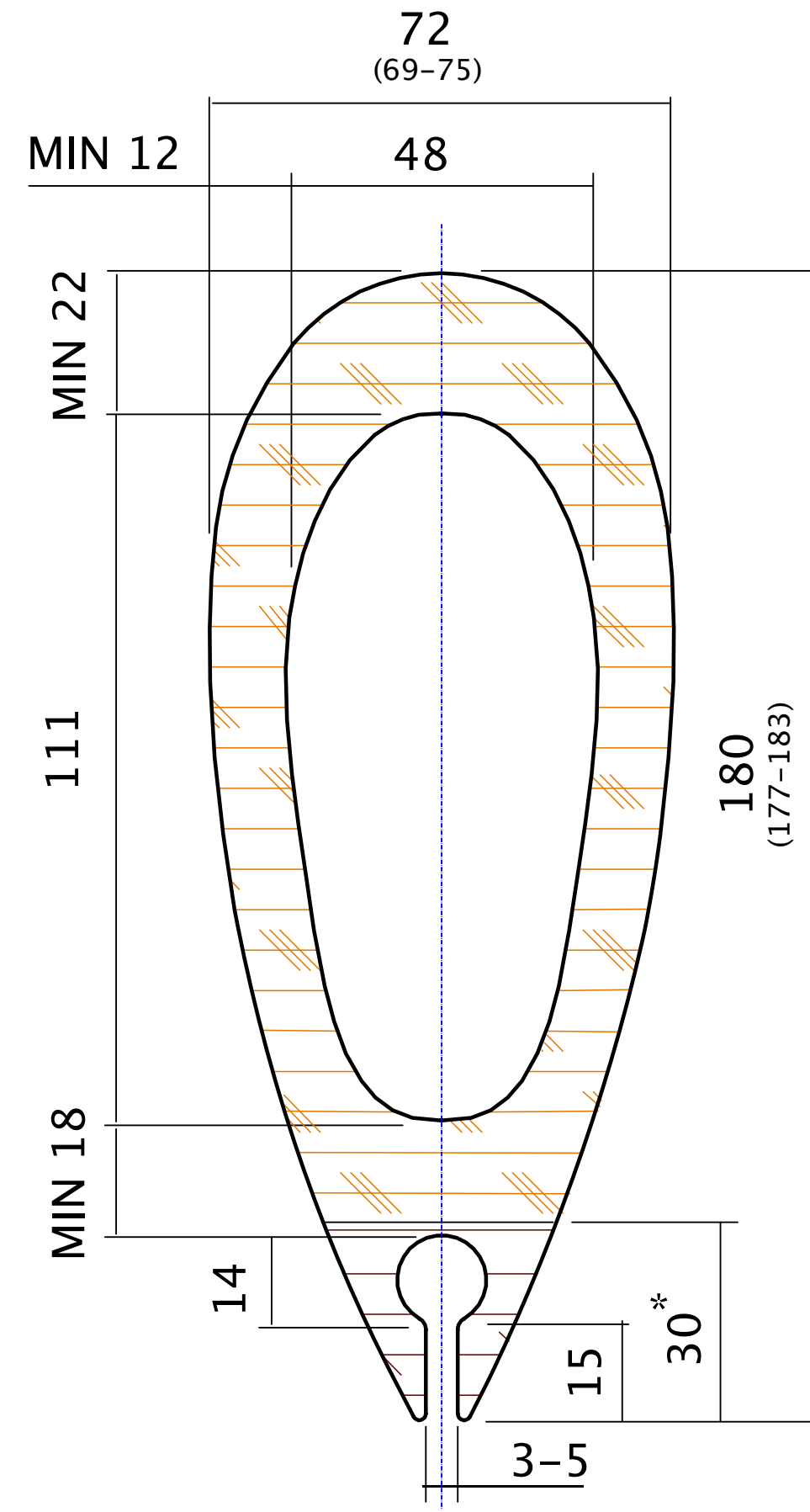
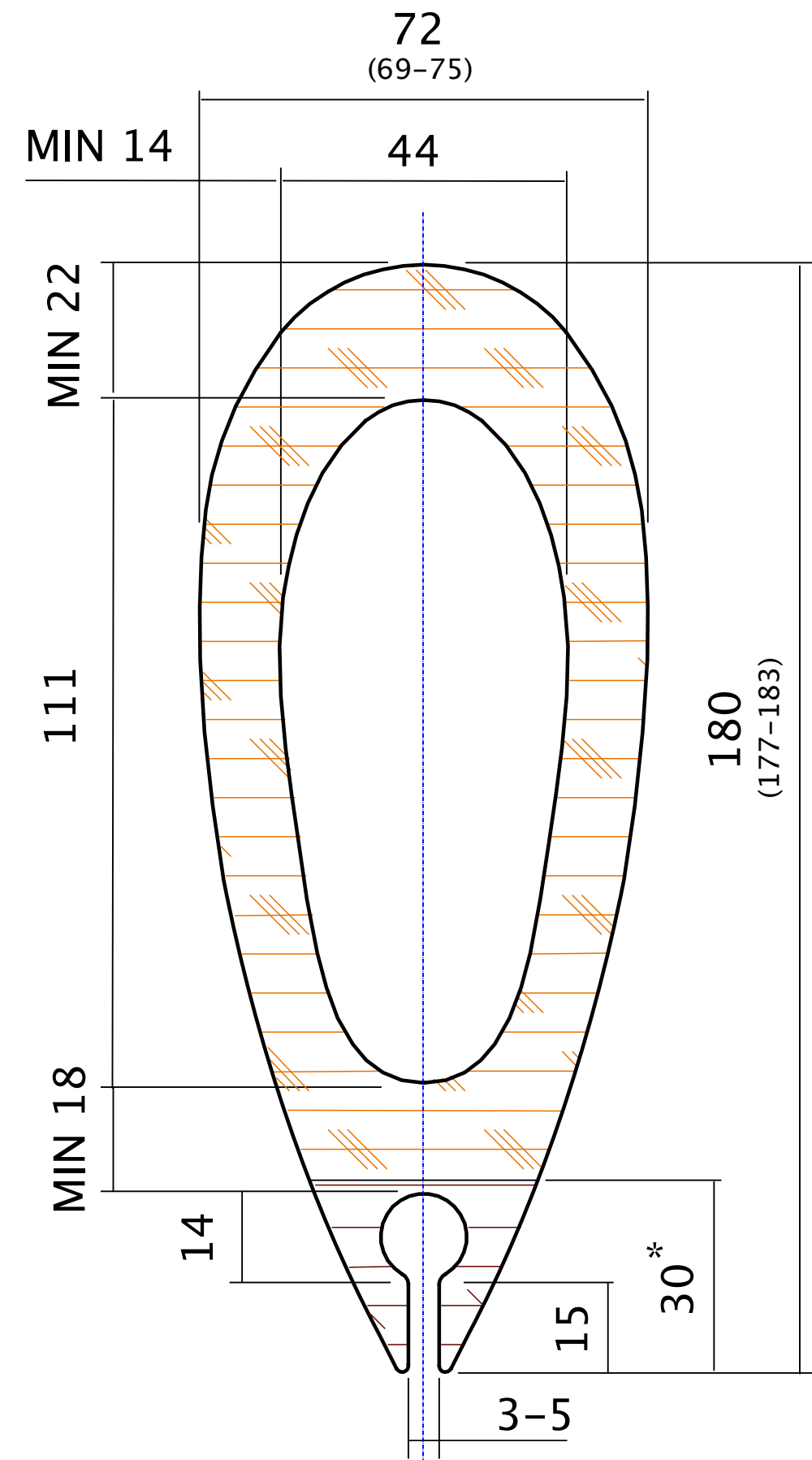
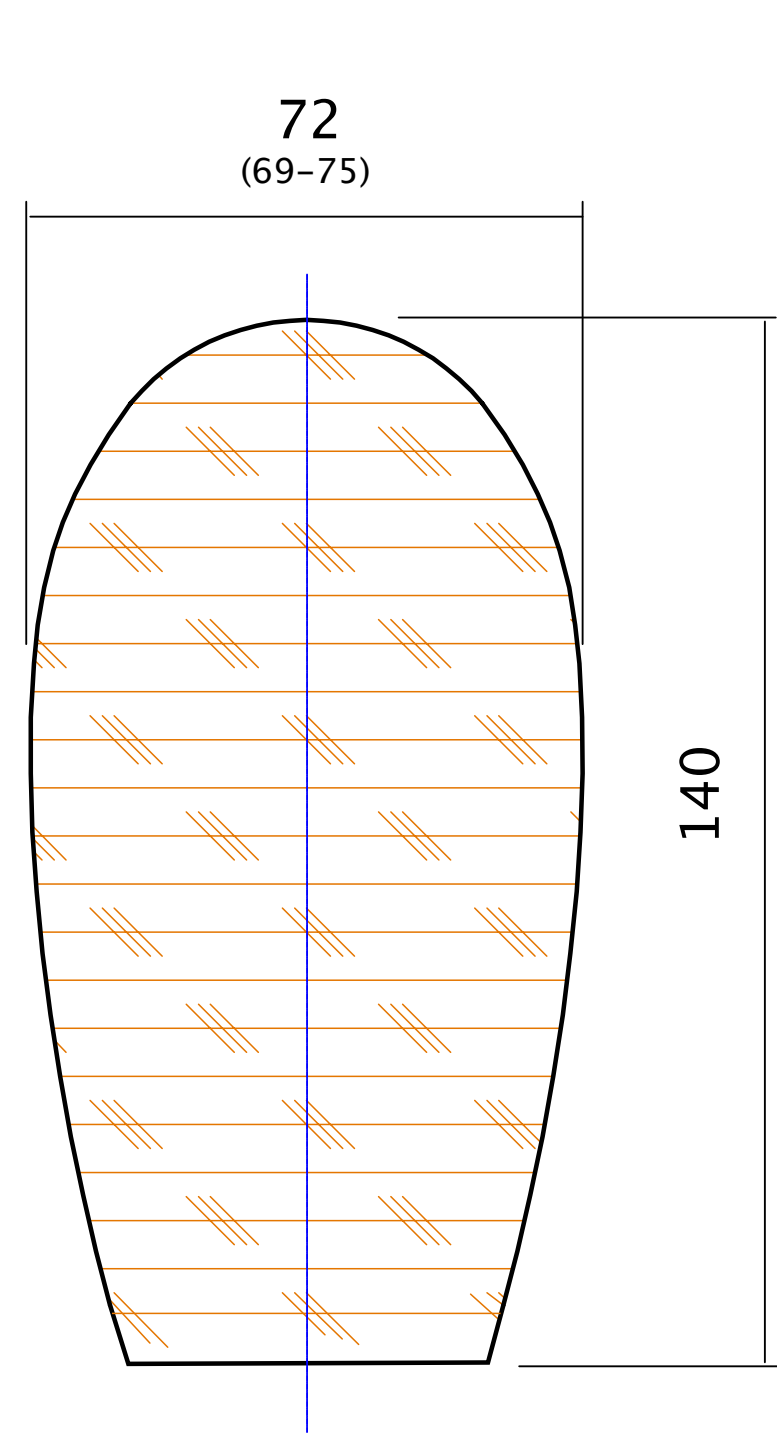
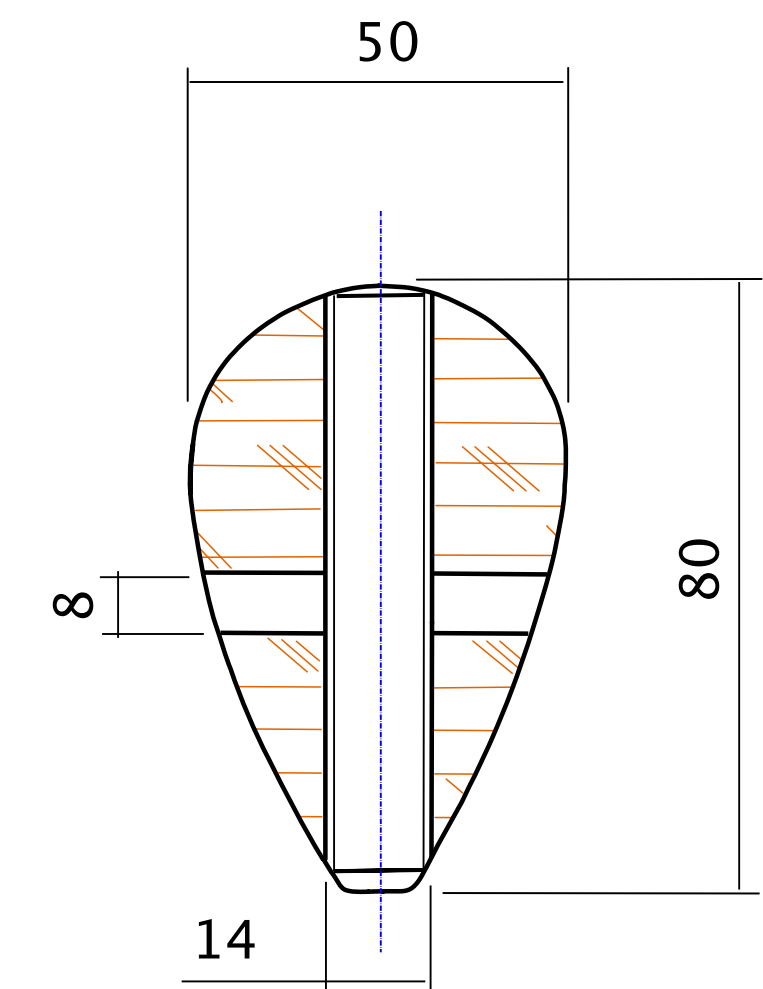
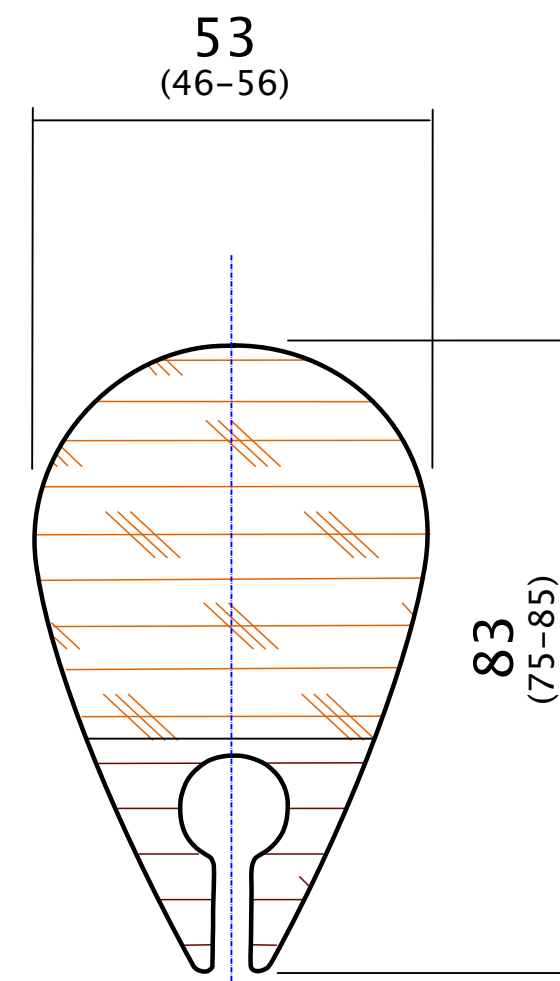
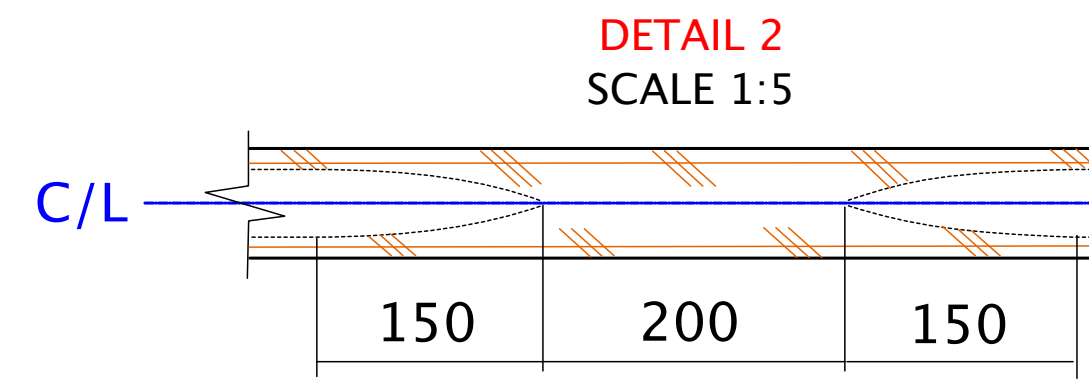
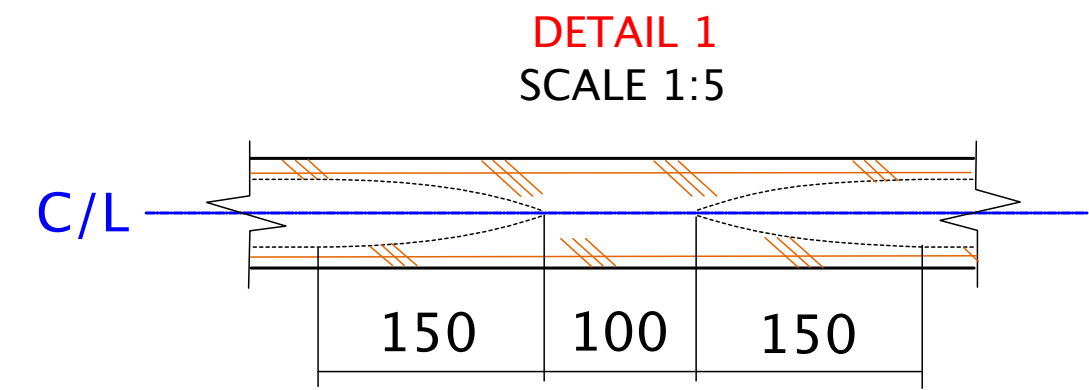
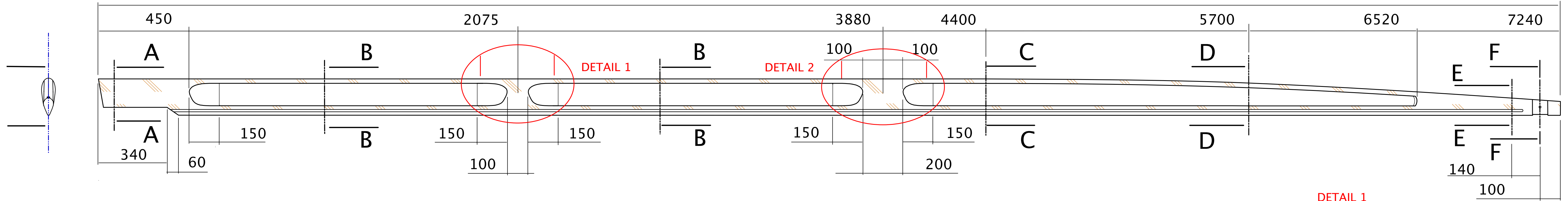


SCALE 1:10

7240
(7230-7250)



SECTION A-A
SCALE 1:1

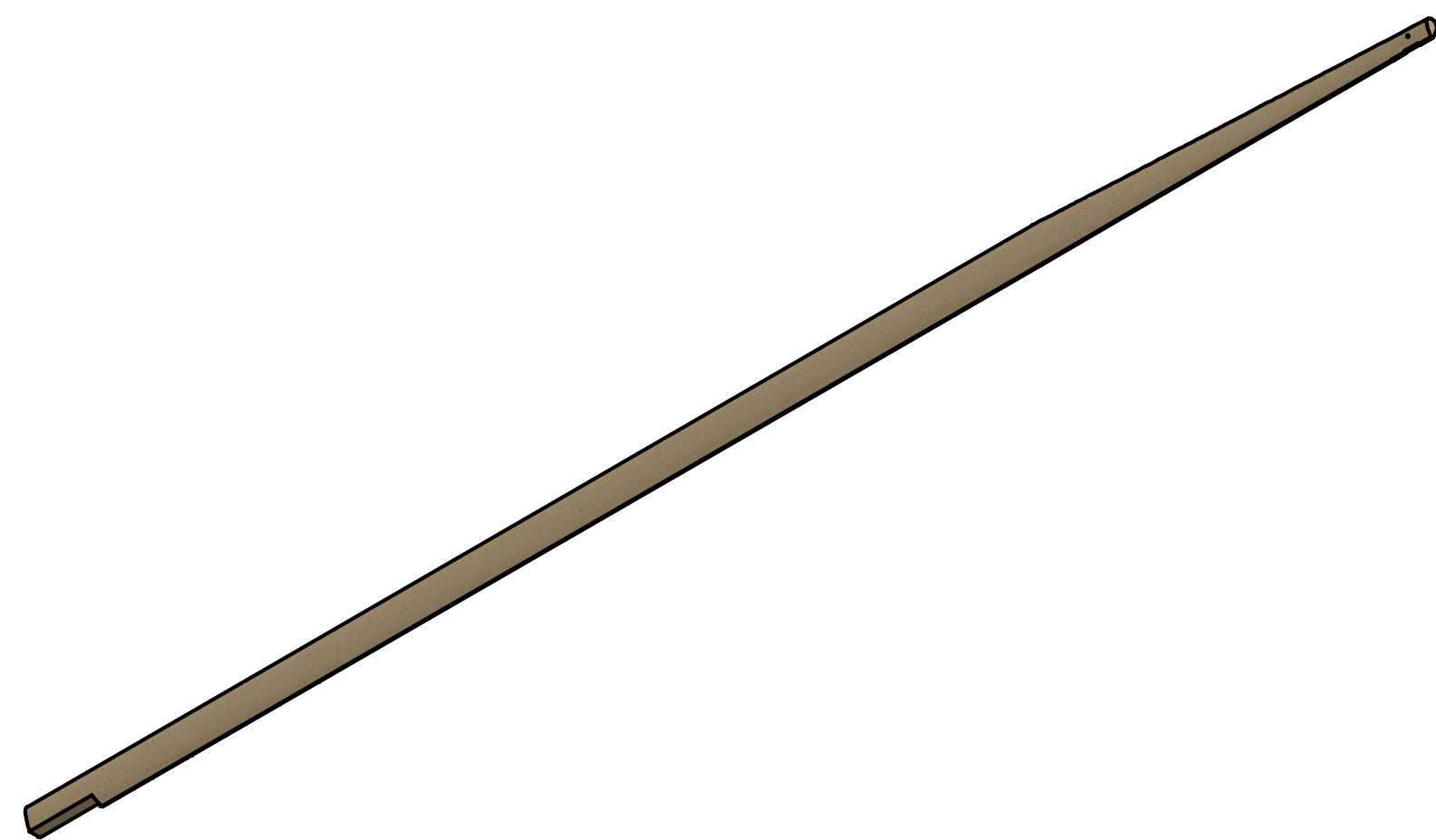
SECTION B-B
SCALE 1:1

SECTION C-C
TAPER STARTING
POINT
SCALE 1:1

SECTION D-D
RECOMMENDED
PROFILE
SCALE 1:1

SECTION E-E
SAIL MARK
7000 MM
SCALE 1:1

SECTION F-F
SCALE 1:1



		ALL DIMENSIONS IN MM		DO NOT SCALE DRAWING	REVISION: 04
		OWNER: IMXVIYRA		TITLE: MONOTYPE-XV MAST	
NAME	SIGNATURE	DATE	NOTES: THE DRAWING SHOWS THE MAST IN FULL LENGTH. THE MAST HEEL NEEDS TO BE CUT THE SAME AMOUNT AS YOUR MAST HEEL FITTING BUILDS, INCLUDING THE LEGTH OF THE CUP, TO STAY WITHIN THE TOTAL LENGTH. SAILMARK, SECTION E-E, AT 7000 MM, INKL. MAST HEEL FITTING. MATERIAL: CONIFER, (SPRUCE) * LUFFGROVE MATERIAL ARE OPTIONAL 30 MM FROM THE AFT END. LUFFGROVE MAY BE TAPED WITH MAX 40 MM FIBERGLASS	DWG: MAST_A1	
DRAWN	J. KINBERG	2017-12-27		SCALE: 1:10, 1:5, 1:1	
CHK'D	D. SCHUTTE			SHEET: 1 OF 1	
CHK'D	A. PADU				
APPV'D	B. ROST				
MFG					
Q.A					